

Golden Light Designs

CROSS - STITCH PATTERNS, LEAFLETS, SUPPLIES, AND MORE

Scarlet Macaw

22-AL



Based on Scarlet Macaw by Petr Kratochvil

Visit our blog at <http://goldenlight-designs.blogspot.com>
Email us at goldenlightdesigns@yahoo.com



Scarlet Macaw



by: Golden Light Designs

Pattern Code:

022-AL

Stitch Count:

140w X 246h

Colors used:

59 Colors Used

Recommended Fabric:

14 Count Antique White Aida

Design Size:

8 Count - 17-1/2w X 30-3/4h in

10 Count - 14w X 24-1/2h in

14 Count - 10w X 17-1/2h in

16 Count - 8-3/4w X 15-3/8h in

Size to Cut Fabric:

Add a minimum of 6 inches to the width and height of the design size. Three inches per side is sufficient for framing but feel free to add more to suit your finishing needs.

Floss Used For Full Stitches

No.	Symbol	Strands	Anchor	DMC	Description	Count
1.	▪	3	2	White	White	132
2.	★	3	6	353	Salmon VY LT	352
3.	☪	3	9	352	Salmon Med LT	73
4.	⊕	3	19	304	Burgundy Med	47
5.	✓	3	35	3705	Blush DK	324
6.	4	3	44	815	Carmin Rose DK	776
7.	↓	3	45	814	Carmin Rose VY DK	37
8.	⊗	3	46	666	Crimson Red	472
9.	≡	3	47	321	Carmin Red	287
10.	a	3	48	3689	China Rose VY LT	45
11.	m	3	65	3350	Antique Rose VY DK	101
12.	6	3	70	3685	Raspberry DK	169
13.	∇	3	72	902	Raspberry VY DK	662
14.	^	3	99	552	Violet	19
15.	8	3	102	550	Violet VY DK	181
16.	■	3	127	939	Indigo	375
17.	6	3	132	797	Cobalt Blue Med DK	338
18.	▣	3	133	796	Cobalt Blue DK	268
19.	◇	3	134	820	Cobalt Blue VY DK	573
20.	◎	3	146	798	Delft Blue	150
21.	✕	3	149	823	Delft Blue Med DK	473
22.	⊗	3	150	336	Delft Blue DK	483
23.	⊠	3	161	813	Sapphire Med	37
24.	⇒	3	177	792	Ocean Blue Med	54

Scarlet Macaw

by: Golden Light Designs

25.	◀	3	178	791	Ocean Blue DK	93
26.	♥	3	273	645	Stone Grey DK	325
27.	♦♦	3	298	972	Jonquil DK	170
28.	#	3	304	741	Citrus DK	188
29.	e	3	311	3827	Tangerine VY LT	30
30.	*	3	330	947	Melon DK	283
31.	⊗	3	333	900	Blaze Med LT	385
32.	●	3	335	606	Blaze DK	1044
33.	⊘	3	337	3778	Terra Cotta Med LT	129
34.	⌘	3	361	738	Nutmeg LT	176
35.	▲	3	370	434	Spice Med DK	100
36.	≡	3	376	3774	Fawn LT	290
37.	◇	3	378	841	Fawn Med	384
38.	▩	3	381	938	Fudge Med	399
39.	■	3	403	310	Black	1992
40.	✕	3	433	996	Ice Blue	70
41.	▣	3	844	3012	Fern Green Med	53
42.	⊗	3	860	522	Laurel Green Med LT	61
43.	⊘	3	862	520	Laurel Green DK	264
44.	♡	3	868	3779	Flesh Med	186
45.	⊕	3	880	951	Copper LT	429
46.	◌	3	893	224	Rose Wine	243
47.	⊗	3	907	832	Saffron DK	117
48.	□	3	968	778	Wineberry LT	185
49.	⊘	3	969	316	Wineberry Med	146
50.	⊗	3	1005	816	Cherry Red Med	80
51.	◇	3	1008	3773	Chicory Med	252
52.	△	3	1011	948	Flesh VY LT	808
53.	∅	3	1012	754	Chicory LT	856
54.	*	3	1019	315	Antique Mauve VY DK	430
55.	◐	3	1036	3750	Antique Blue VY DK	183
56.	⊗	3	1050	3781	Tawny Med DK	196
57.	⌘	3	1082	841	Taupe Med LT	145
58.	◆	3	1098	606	Crimson Red LT	106
59.	➔	3	9046	321	Christmas Red	724

Special Instructions:

Chart Connection:



Scarlet Macaw



by: *Golden Light Designs*

This pattern was designed primarily with Anchor threads.

1	2	3
4	5	6
7	8	9
10	11	12

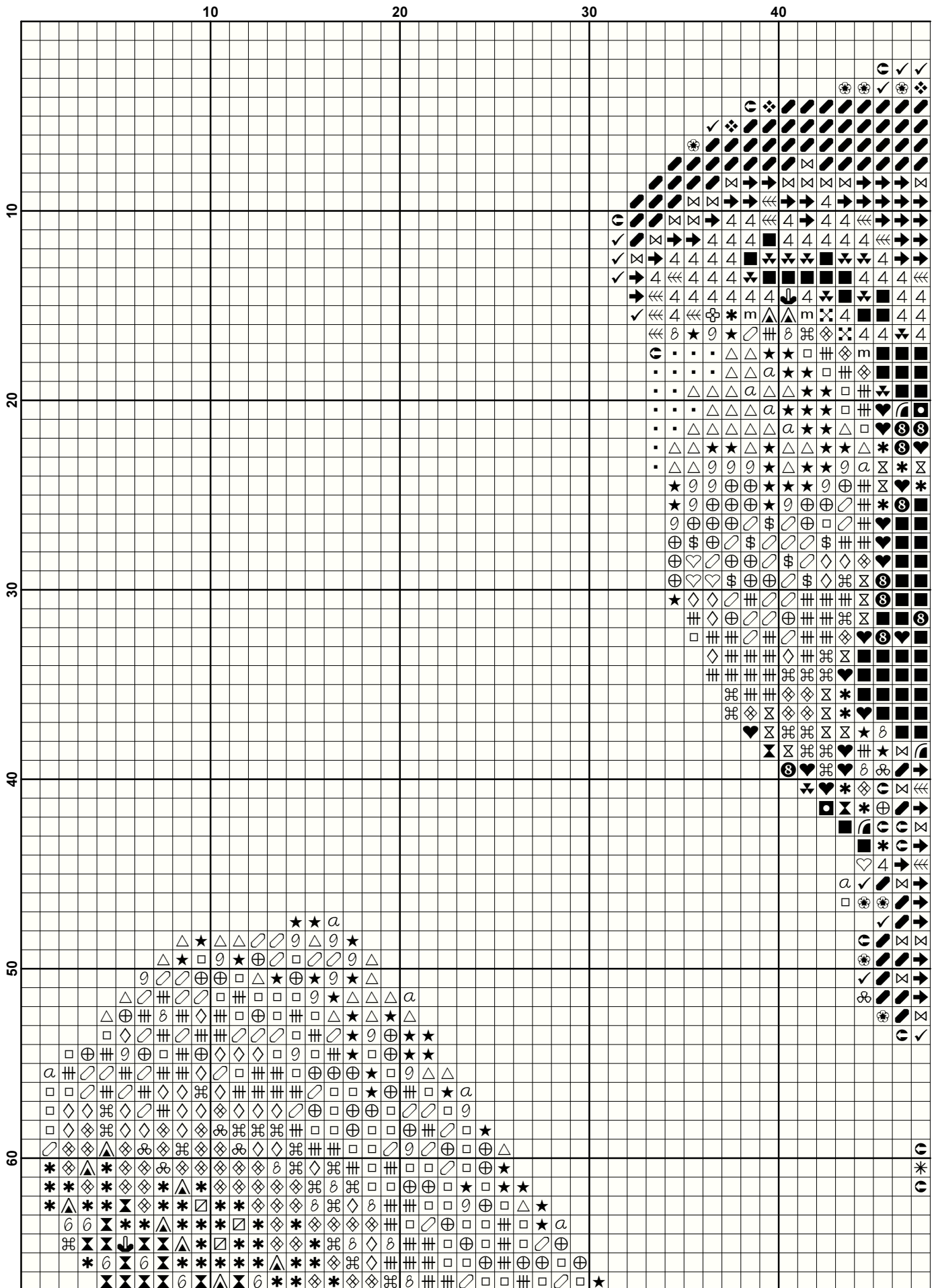
Note:

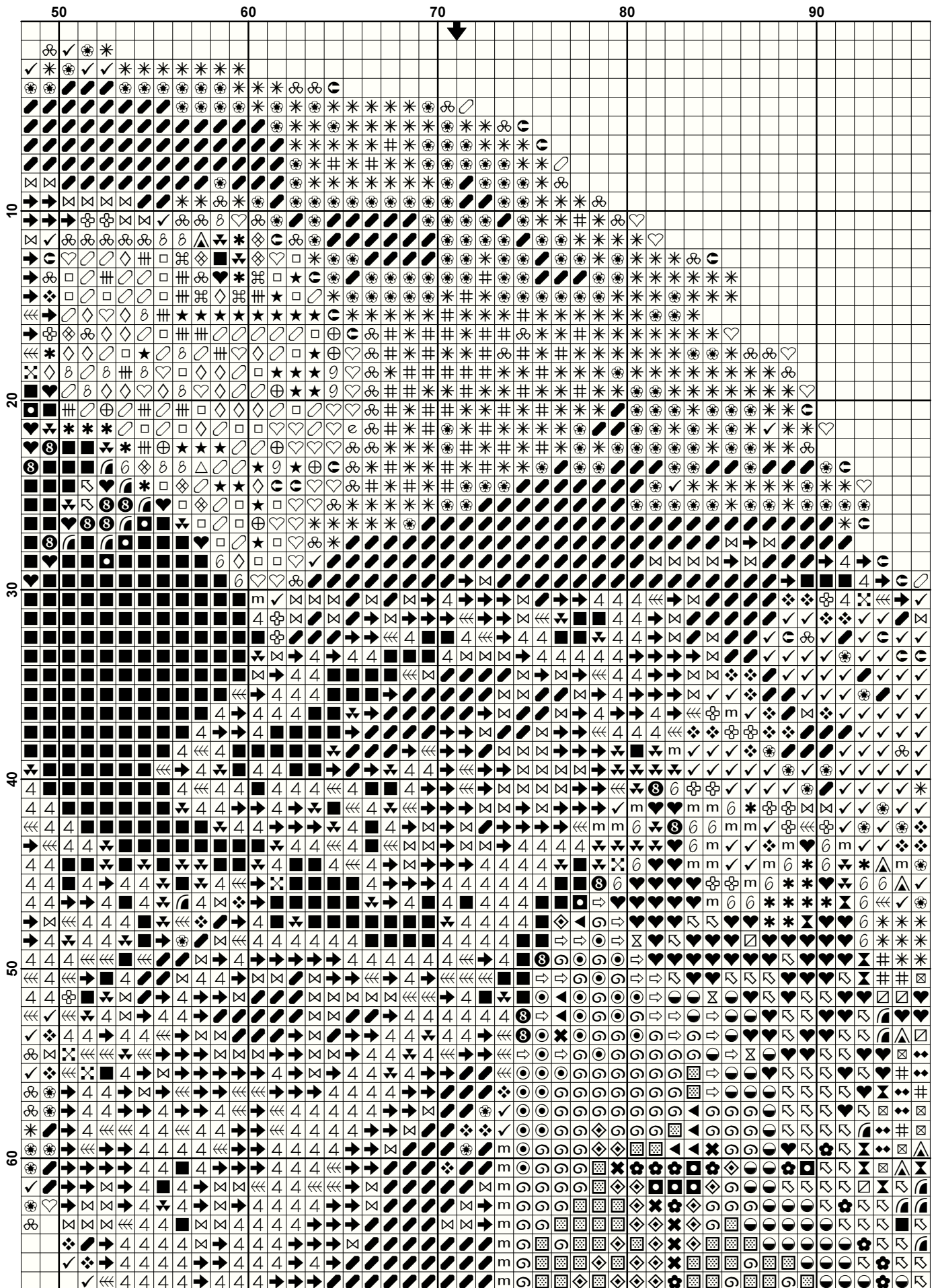
We have made every effort to ensure the accuracy of this chart, however, we are not responsible for typographical errors, human errors and variations in individual stitching.

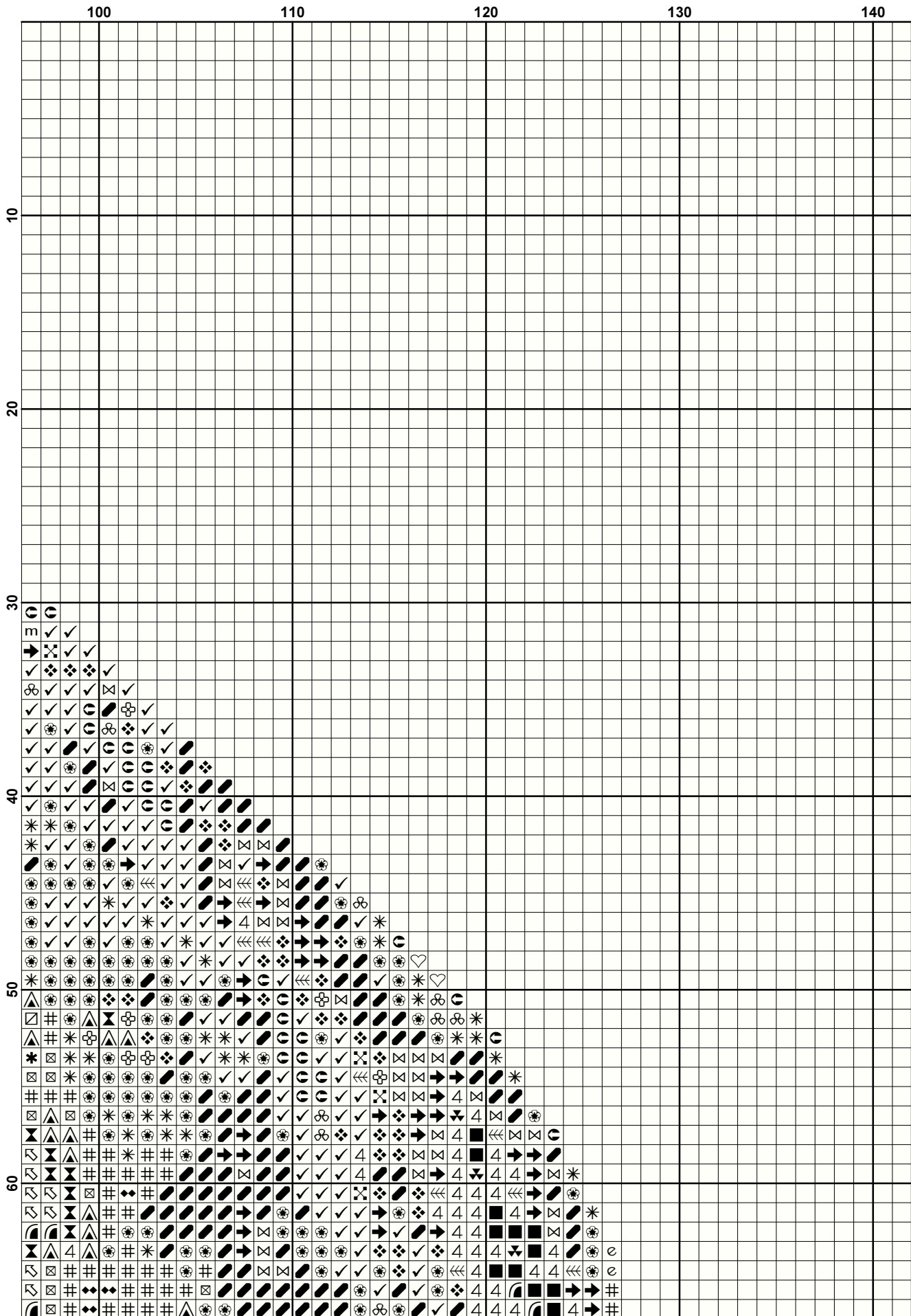
This chart is based on Scarlet Macaw by Petr Kratochvil.

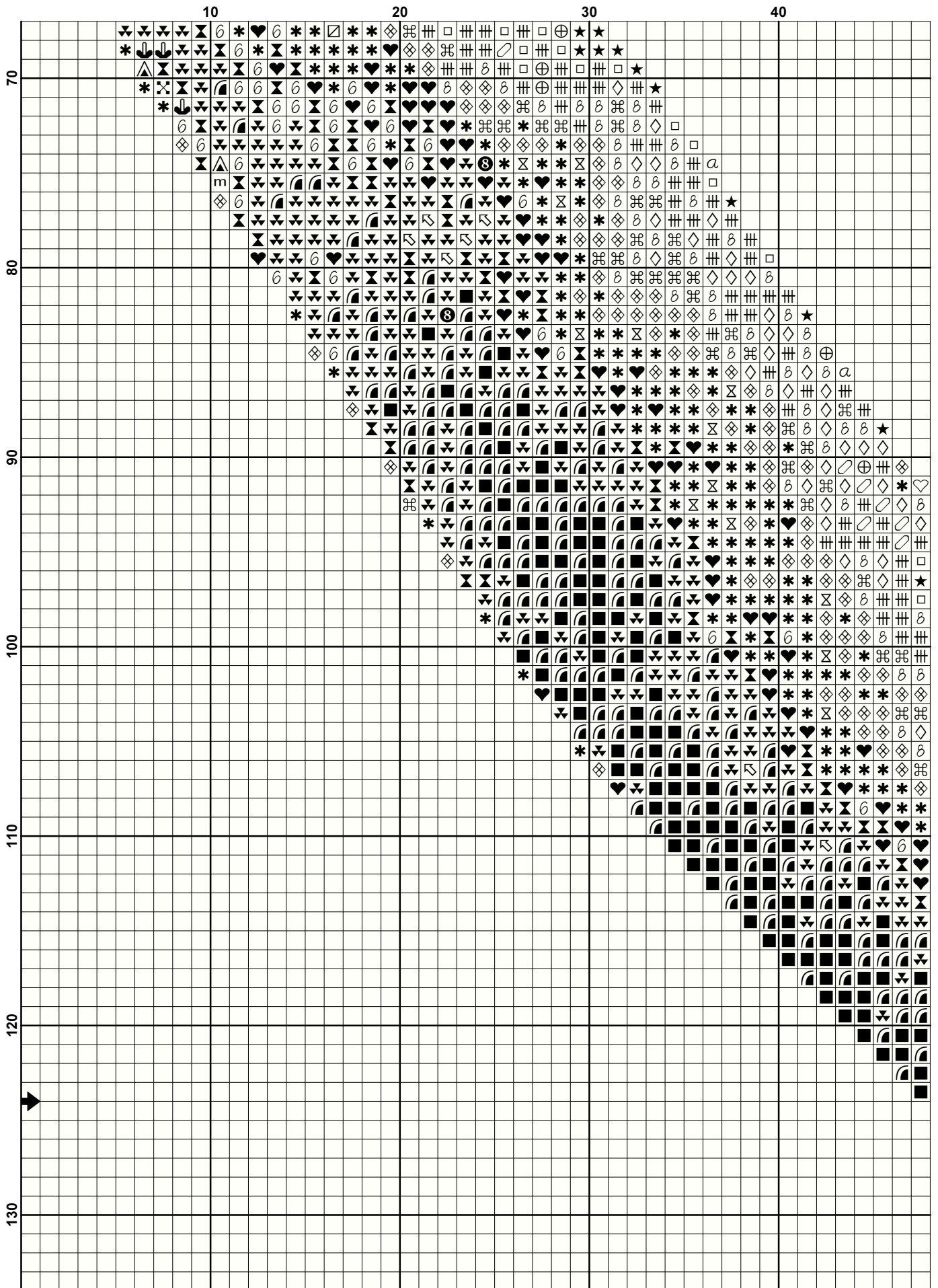
No part of this graph, chart, color key, and instructions may be reproduced in any manner, kitted, re-charted, stored in a retrieval system, or transmitted in any form or by any means, electronic, mechanical, photocopying, recording or otherwise including posting in the internet, without the prior express written permission from Golden Lights Designs. It is illegal to redistribute, email, sell or give away any reproduction of this original chart, instructions, and color images in any manner.

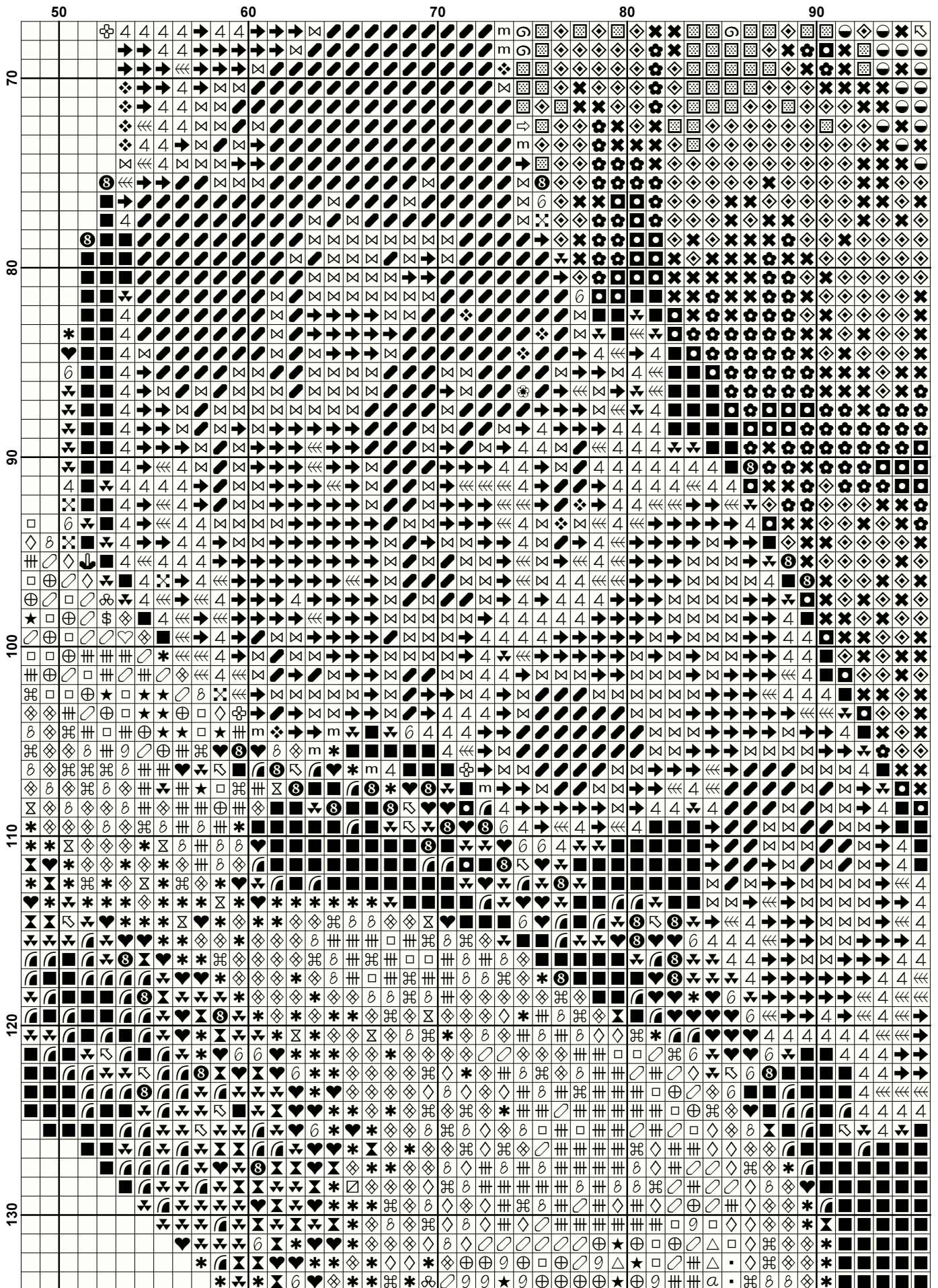
If you want to order a kit of this chart, please e-mail me at goldenlightdesigns@yahoo.com

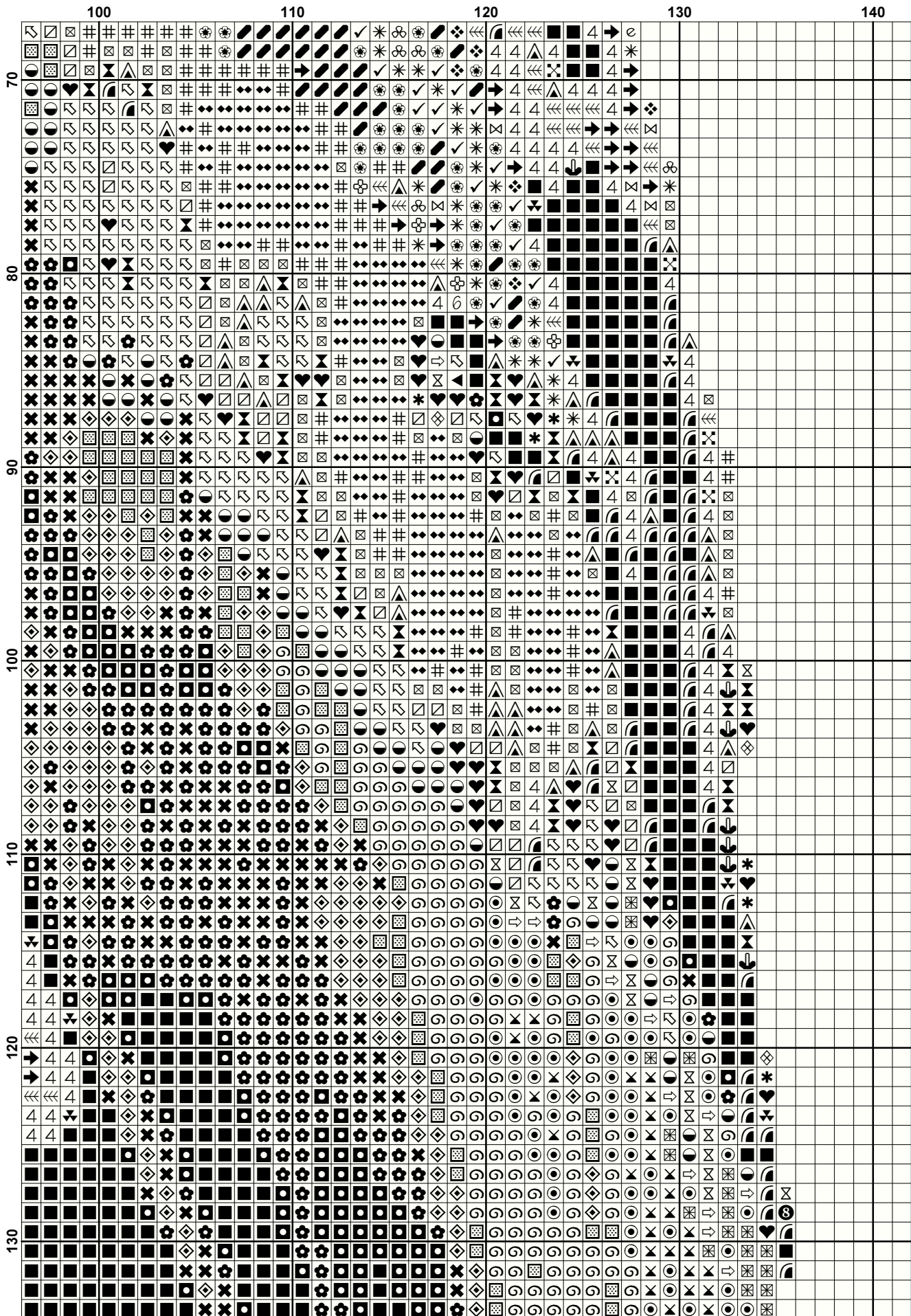


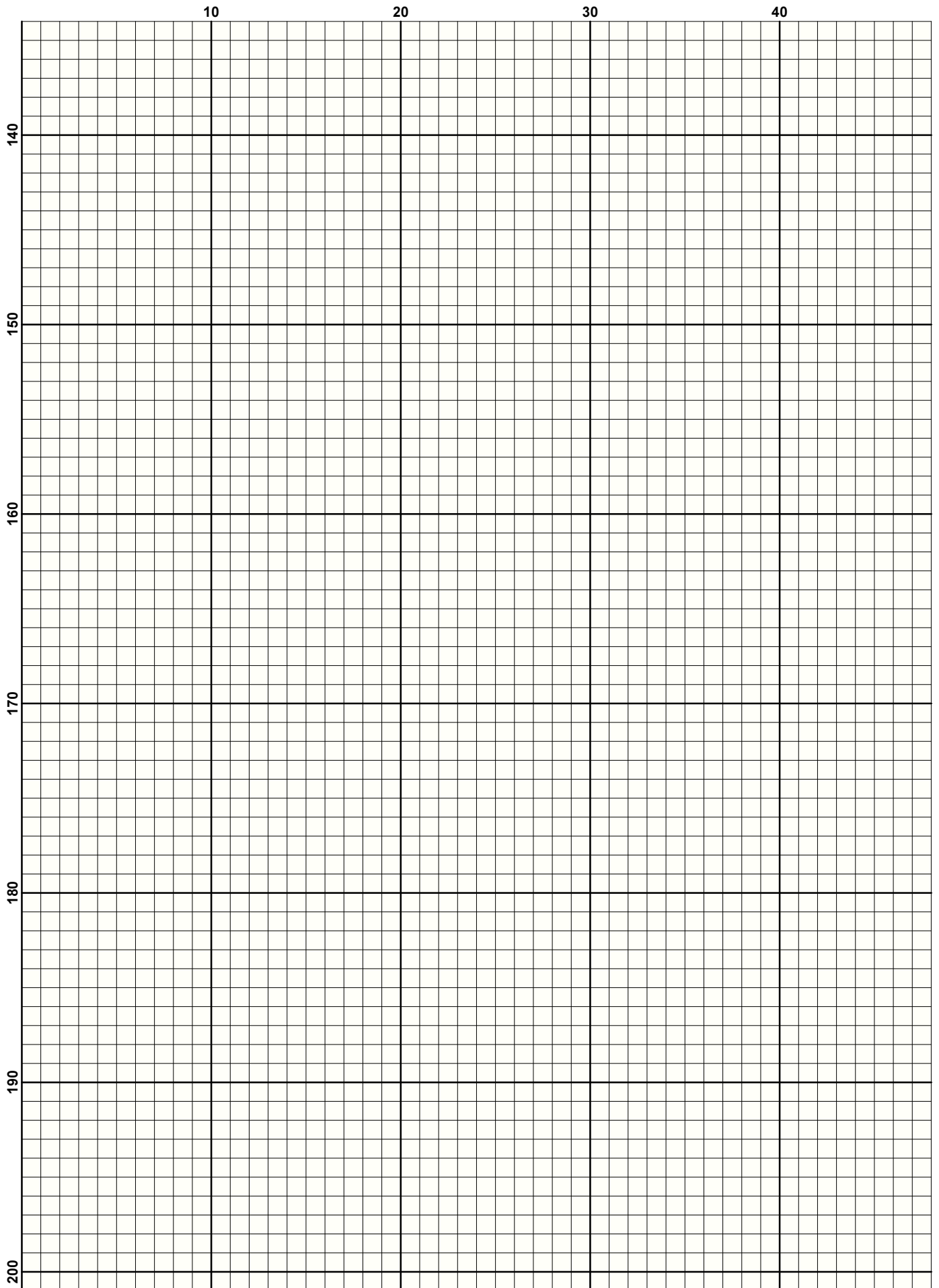


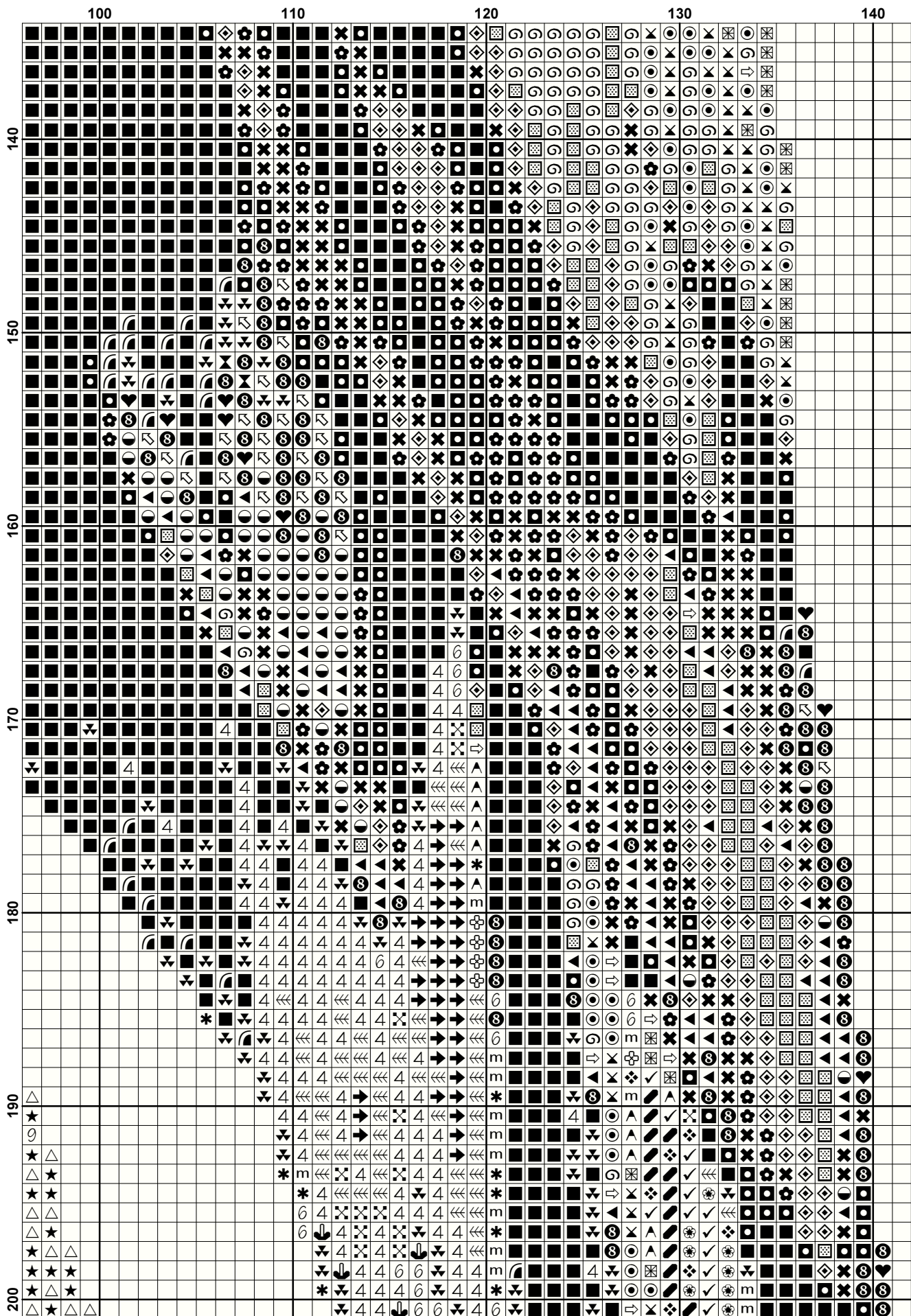


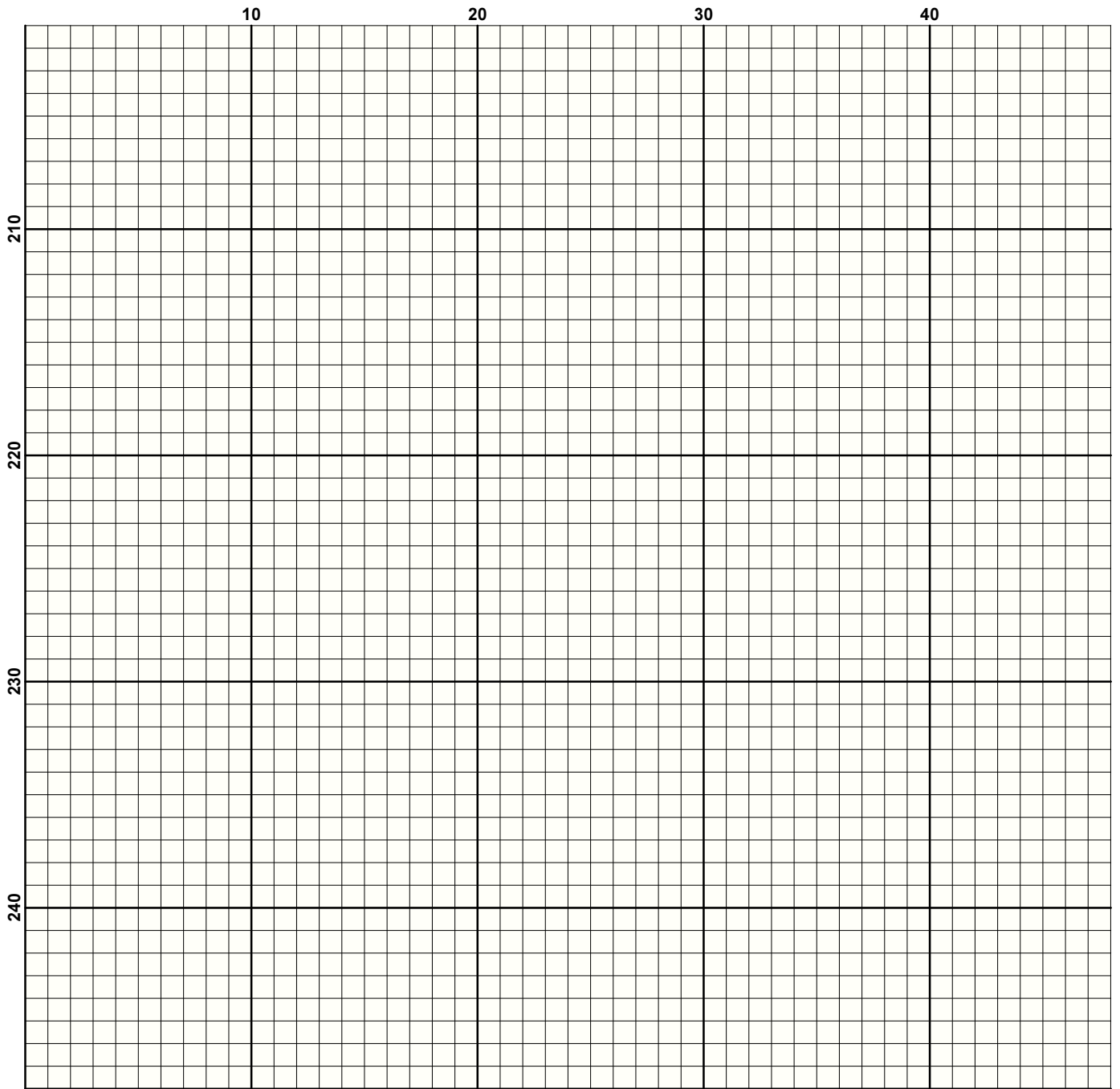


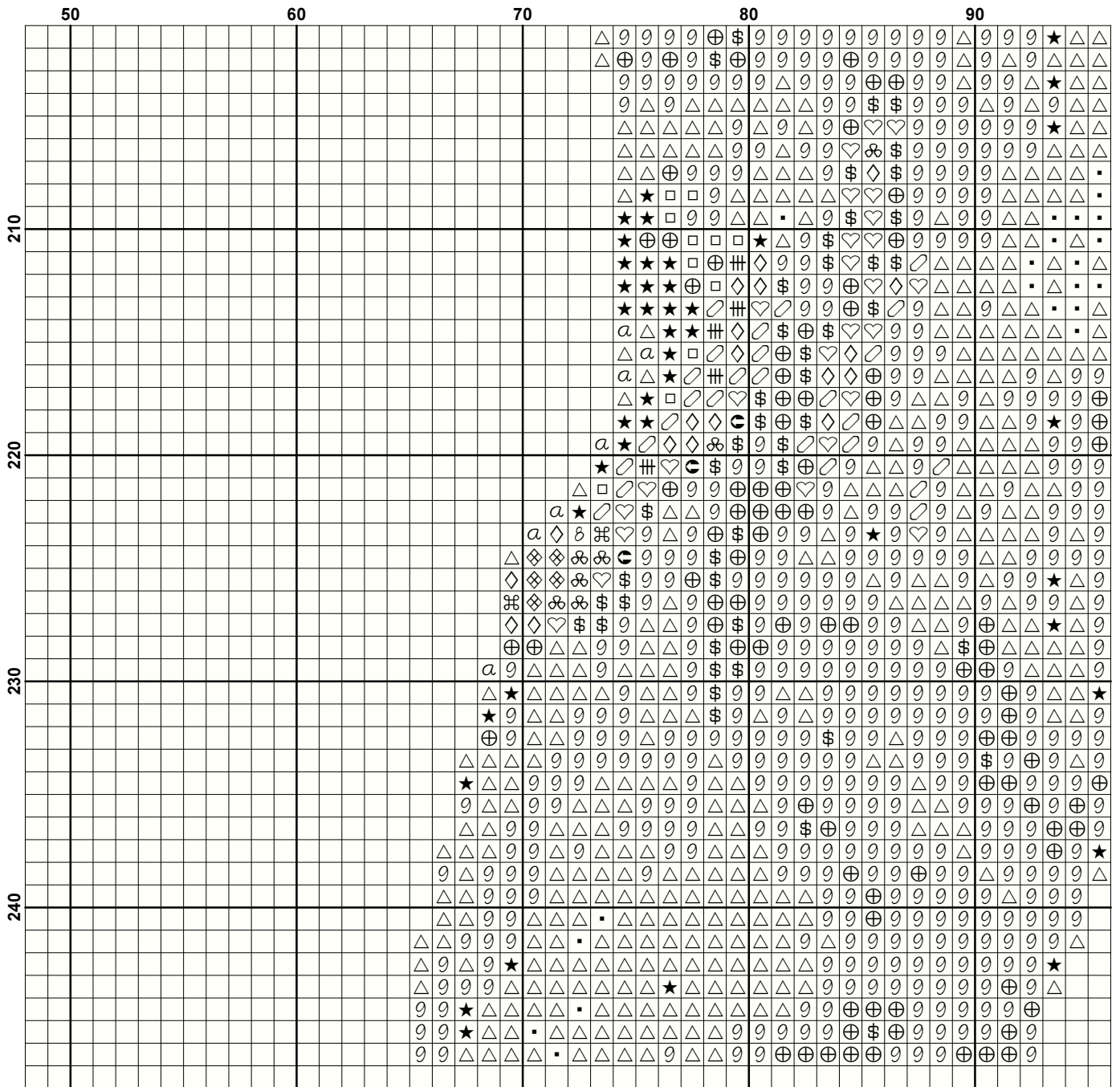












	100	110	120	130	140
210	★△★△				
	★△★△				
	★△△△				
	△△△△				
	△△△★	a			
	△△△△	a			
	△△△△	⊕			
	△△△△	★			
	△△△△	a			
	△△△△	a			
220	★#	△	★	#	
	⊕	◇	β	#	★
	◇	◇	◇	◇	◇
	◇	◇	◇	◇	◇
	◇	◇	◇	◇	◇
	◇	◇	◇	◇	◇
	◇	◇	◇	◇	◇
	◇	◇	◇	◇	◇
	◇	◇	◇	◇	◇
	◇	◇	◇	◇	◇
230	⊕	⊕	⊕	⊕	⊕
	⊕	⊕	⊕	⊕	⊕
	⊕	⊕	⊕	⊕	⊕
	⊕	⊕	⊕	⊕	⊕
	⊕	⊕	⊕	⊕	⊕
	⊕	⊕	⊕	⊕	⊕
	⊕	⊕	⊕	⊕	⊕
	⊕	⊕	⊕	⊕	⊕
	⊕	⊕	⊕	⊕	⊕
	⊕	⊕	⊕	⊕	⊕
240					